

THE CLINCH RIVER ANGLER

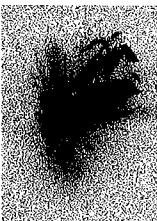


UPCOMING

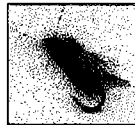
Nov. 9 TN Council of Trout Unlimited will meet in Cumberland State Park to elect officers, consider changes in By-Laws.

Nov. 14, 7p Next Clinch River Chapter meeting: HB McCowen discusses fishing with soft tackle. Steve Brown demonstrates tying soft tackle flies and John Thurman gets us all tied up in knots demonstrations. **Note:** attention and discussion is being given to making our meetings more beneficial to members: e.g. meeting format already is changed, a member-to-member lending library. Come and be a part of our improvements.

Nov. 16, 8a Work Day at Briceville School to clear the ball park for the kids. Sign in at the Briceville Volunteer Fire Department. Work winds up at noon with lunch served. Wear gloves and boots; bring clearing tools, chain saws, hand saws, weed eaters, rakes, etc. Questions?-contact Carol Moore.



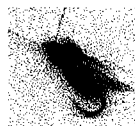
The Clinch River Chapter -
dedicated to conserving,
protecting and restoring the
natural environment of the
Clinch River Watershed



WARM RECEPTIONS TO NEW VIDEO OF THE CLINCH RIVER TAIL WATER

“Cecil B. de Thurman’s” video showcasing the Clinch tail water as “Anderson County’s Natural Resource Jewel” is receiving very favorable accolades. Chapter members (H.B. Mc Cowan, Carol Moore, John Thurman, Steve Brown) have presented this informative video to four area organizations with much discussion and appreciation following.

Any member with suggestions of an organization being interested in sharing this 15-20 minute presentation can contact any of the above persons (or, the script and video easily can be presented by any member).



FIRST REDD SURVEY REVEALS INTERESTING RESULTS

John Thurman and Will Hembree, a Clinton High student, completed the first redds survey on Nov. 2, at Lewellan Island. They found 17 well defined depressions plus one probable redd.

They were teased by two pair of unknown species of trout in the 6-7 pound class on two redds; a couple of 18 inchers on two others; a smaller fish on another; two huge carp on one large redd (probably eating eggs); saw another very large fish move off a redd.

Helpers are needed for this interesting, important project. Please call Dick Geiger or John Thurman.

FISHERMAN’S CORNER: TIP OF THE MONTH

Ever fish a stream flicking a fly here and there with the fly barely floating a foot before it’s lifted to explore a new haunt? Usually this method is non-productive. On the premise that more fish will be caught with the fly in the water than out, keep it in the water: most strikes will be after a fifteen foot or so float often near your feet.

**Clinch River Chapter
Projects: 2002-2003**



**CLINCH RIVER CHAPTER
BOARD/OFFICERS**

Activity	Leader	Date
• Redd survey	Dick Geiger	Nov. 1 - Mar.
• Sediment sampling	John Thurman	Nov. - June
• Fry survival survey	Thurman	Feb. - June
Kids Fish Free Day	Carol Moore	Early June
Shoreline cleanup	David Hunter and Cathy Jarrolds	April
Tire/trash cleanup	Buzz Buffington	June - Aug.
Coal Creek bank stabilization project	Barry Thacker	May - August
Embrace-A-Stream grant application (Coal Creek and Cane Creek water quality monitoring)	Thurman/Coal Creek Watershed Foundation Vista Volunteers	Nov. 1
Fly tying class	Buffington	Jan. - Feb.
Fishing class	Thurman	Jan. - June
Weir cleanout	Thurman	Oct. 26
Second Baptist Church Public Access (behind AC Detention Center)	Ralph Jordan	Winter/spring
Miller Island Public Area development	Jordan	Winter/spring
Adopt-A-Highway Litter Control	Steve Brown	Winter
TVA Res. Ops EIS comments	Buffington/Thurman	October
Coal Creek Health Day	Moore	Oct. 25
One Fly Contest	H. B. McCowan	Scoping
Clinch Bank Stabilization Project Proposal	Buffington	Winter/spring

**CLINCH RIVER TRAVEL
AND DRAIN-DOWN TIMES**

Excerpted from July-1998 Clinch River Angler by John Thurman

You know when the generator(s) at Norris Dam are being turned on or off (800.238.2264). But when can you safely get out or in where you are going to fish? Tables 1 and 2 are products of the efforts of CRC members John Thurman and Buzz Buffington plus TVA engineer, Bill Proctor.

Minimum flow is about 200-300 cfs. When the generator(s) are on and reach 3000 cfs, it is too difficult to wade. As a safety precaution, fishermen should be out of the River at a flow rate of 1000 cfs.

The tables estimate the hours of travel time, from the Dam to various locations, and the drain times to reach 1000 cfs.

Table 1 estimates safe get out times from when units start

Location	1 Unit	2 Units
Miller Island	1.0	0.5
Peach Orchard	2.75	1.75
Cold Water	4.0	2.75
Riverbend	4.5	3.5
61 Bridge	5.5	4.0

Table 2 estimates safe get in times from when units stop

Location	1 Unit	2 Units
Miller Island	1.5	2.0
Peach Orchard	4.0	5.0
Cold Water	6.0	7.0
Riverbend	7.5	8.5
61 Bridge	8.5	9.5

- HB McCowan President
865.426.2715
clinchrivhouse.com/Email
#
- Dick Geiger Vice President
865.457.1228
GeigrCnt@ICX.net
#
- Carol Moore Sec.-Treas.
865.584.0344
Clmoore@geoe.com
#
- Bob Greer BOD
Rhgdds@mailstaton.com
#
- Dave Hunter BOD
865.947.0479
Hunterd@orau.gov
#
- Cathy Jerrolds BOD/
Membership Chairperson
865.947.0479
Cjerrolds@msn.com
#
- Bob Jenkins BOD
Newsletter
423.566.6734
jrdjenk@aol.com
#
- Rick Ross BOD
865.376.8878
Rick.ross@mindspring.com
#
- Barry Thacker BOD
865.690.4268
Barryt@geoe.com
#
- John Thurman BOD
Past President
865.494.7771
Jthurman@ntown.com
#

Look for a project which appeals to your interests and contact the lead person for more information or to volunteer your talents.

#

**Clinch River Angler
Newsletter**

Co-Editors Bob and Mary Jo Jenkins
Comments & contributors are welcomed!